



# CoreLine Panel

## RC125Z SMB W60L60

White - Width 600 mm, length 600 mm

Whether for a new building or renovation of an existing space, customers want lighting solutions that provide quality of light and substantial energy and maintenance savings. The new CoreLine Panel range of LED products can be used to replace functional luminaires in general lighting applications. Both Non-Office Compliant (NOC) version and Office Compliant version (OC) are now available. The process of selecting, installing and maintaining is so easy – it's a simple switch.

### Product data

General Information	
Protection class IEC	Safety class II
Type description	Width 600 mm, length 600 mm
CE mark	CE mark
Material	Aluminum
Accessory color	White

Operating and Electrical	
Input Voltage	220 to 240 V
Input Frequency	50 to 60 Hz

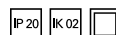
  

Mechanical and Housing	
Overall length	612 mm
Overall width	612 mm
Overall height	52 mm

Approval and Application	
Ingress protection code	IP20 [ Finger-protected]
Mech. impact protection code	IK02 [ 0.2 J standard]

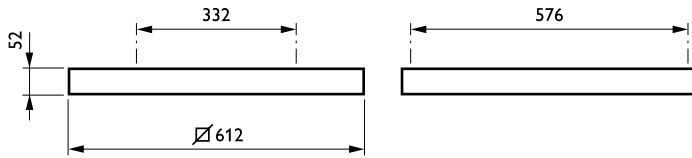
  

Product Data	
Full product code	871869607330899
Order product name	RC125Z SMB W60L60
EAN/UPC - Product	8718696073308
Order code	910930031018
Numerator - Quantity Per Pack	1
Numerator - Packs per outer box	10
Material Nr. (12NC)	910930031018
Net Weight (Piece)	1.000 kg



## CoreLine Panel

### Dimensional drawing



CoreLine Panel acc. RC125Z-RC132Z

