

# Feed-through terminal block - ST 10

3036110

<https://www.phoenixcontact.com/ro/produse/3036110>

Vă rugăm să țineți cont de faptul că datele afișate în acest document PDF au fost generate din catalogul nostru online. Datele complete sunt disponibile în documentația pentru utilizator. În cazul descărcărilor, se aplică Termenii și condițiile generale de utilizare ale companiei noastre.



Feed-through terminal block, nom. voltage: 1000 V, nominal current: 57 A, connection method: Spring-cage connection, 1 level, Rated cross section: 10 mm<sup>2</sup>, cross section: 0.2 mm<sup>2</sup> - 16 mm<sup>2</sup>, mounting type: NS 35/7,5, NS 35/15, color: gray

## Avantajele dumneavoastră

- The flexible options for reducing bridging in the CLIPLINE complete system can be found in "Accessories for the CLIPLINE complete modular terminal block system"
- The double bridge shaft not only enables individual chain bridging, but also reducing bridging to spring-cage terminal blocks with smaller cross sections
- Tested for railway applications

# Feed-through terminal block - ST 10



3036110

<https://www.phoenixcontact.com/ro/produse/3036110>

## Date comerciale

Cod comandă	3036110
Unitate de ambalare	50 Bucată
Cantitate minimă pentru comandă	1 Bucată
Cod produs	BE2111
Pagina de catalog	Pagina 243 (C-1-2019)
GTIN	4017918819088
Greutate pe bucată (inclusiv ambalajul)	25,3 GRM
Greutate pe bucată (fără ambalaj)	25,3 GRM
Cod tarifar vamal	85369010
<input type="checkbox"/> ara de origine	PL

# Feed-through terminal block - ST 10



3036110

<https://www.phoenixcontact.com/ro/produse/3036110>

## Date tehnic

### Product properties

Area of application	Railway industry
	Machine building
	Plant engineering
	Process industry
Number of connections	2
Number of rows	1
Potentials	1

### Insulation characteristics

Overvoltage category	III
Degree of pollution	3

### Electrical properties

Rated surge voltage	8 kV
Maximum power dissipation for nominal condition	1.82 W

### Connection data

Number of connections per level	2
Nominal cross section	10 mm <sup>2</sup>

#### 1 level

Stripping length	18 mm
Internal cylindrical gage	A6
Connection in acc. with standard	IEC 60947-7-1
Conductor cross section solid	0.2 mm <sup>2</sup> ... 16 mm <sup>2</sup>
Cross section AWG	24 ... 6
Conductor cross section flexible	0.2 mm <sup>2</sup> ... 10 mm <sup>2</sup>
Conductor cross section, flexible [AWG]	24 ... 8
Flexible conductor cross section flexible (ferrule, w/o plastic sleeve)	0.25 mm <sup>2</sup> ... 10 mm <sup>2</sup>
Flexible conductor cross section (ferrule with plastic sleeve)	0.25 mm <sup>2</sup> ... 10 mm <sup>2</sup>
2 conductors with the same cross section, flexible, with TWIN ferrule with plastic sleeve	1.5 mm <sup>2</sup> ... 2.5 mm <sup>2</sup>
Nominal current	57 A
Maximum load current	65 A (with 16 mm <sup>2</sup> conductor cross section)
Nominal voltage	1000 V
Nominal cross section	10 mm <sup>2</sup>
Connection in acc. with standard	IEC/EN 60079-7
Test certificate name	KEMA 01ATEX2260 U
Conductor cross section solid	1.5 mm <sup>2</sup> ... 16 mm <sup>2</sup>
Cross section AWG	16 ... 6
Conductor cross section flexible	1.5 mm <sup>2</sup> ... 10 mm <sup>2</sup>

# Feed-through terminal block - ST 10



3036110

<https://www.phoenixcontact.com/ro/produse/3036110>

Maximum load current	63 A (with 16 mm <sup>2</sup> conductor cross section)
	50 A (with 10 mm <sup>2</sup> conductor cross section)
Nominal voltage	550 V

## Ex data

### Rated data (ATEX/IECEX)

ATEX certificate	KEMA 01 ATEX 2260 U
IEC Ex certificate	IECEX KEM 06.0033 U
Identification	Ex eb IIC Gb
Operating temperature range	-60 °C ... 110 °C
Ex-certified accessories	3036644 D-ST 10
	1206612 SZF 3-1,0X5,5
	3022276 CLIPFIX 35-5
	3022218 CLIPFIX 35
	Plug-in bridge / FBS 2-10 / 3005947
	Plug-in bridge / FBS 5-10 / 3005948
Bridge data	53.5 A / 10 mm <sup>2</sup>
Ex temperature increase	40 K (56.6 A / 10 mm <sup>2</sup> )
Rated voltage	-
for bridging with bridge	550 V
Rated insulation voltage	500 V

### Ex level General

Rated current	51 A
Maximum load current	59.5 A
Contact resistance	0.4 mΩ

### Ex connection data General

Nominal cross section	10 mm <sup>2</sup>
Rated cross section AWG	8
Connection capacity rigid	1.5 mm <sup>2</sup> ... 16 mm <sup>2</sup>
Connection capacity AWG	16 ... 6
Connection capacity flexible	1.5 mm <sup>2</sup> ... 10 mm <sup>2</sup>
Connection capacity AWG	16 ... 8

## Dimensions

Width	10.2 mm
End cover width	2.2 mm
Height NS 35/15	57.8 mm
Height NS 35/7,5	50.3 mm
Length	71.5 mm

## Material specifications

Color	gray
Flammability rating according to UL 94	V0

# Feed-through terminal block - ST 10



3036110

<https://www.phoenixcontact.com/ro/produse/3036110>

Insulating material group	I
Insulating material	PA
Static insulating material application in cold	-60 °C
Temperature index of insulation material (DIN EN 60216-1 (VDE 0304-21))	125 °C
Relative insulation material temperature index (Elec., UL 746 B)	130 °C
Fire protection for rail vehicles (DIN EN 45545-2) R22	HL 1 - HL 3
Fire protection for rail vehicles (DIN EN 45545-2) R23	HL 1 - HL 3
Fire protection for rail vehicles (DIN EN 45545-2) R24	HL 1 - HL 3
Fire protection for rail vehicles (DIN EN 45545-2) R26	HL 1 - HL 3
Calorimetric heat release NFPA 130 (ASTM E 1354)	27,5 MJ/kg
Surface flammability NFPA 130 (ASTM E 162)	passed
Specific optical density of smoke NFPA 130 (ASTM E 662)	passed
Smoke gas toxicity NFPA 130 (SMP 800C)	passed

## Electrical tests

### Surge voltage test

Test voltage setpoint	9.8 kV
Result	Test passed
Short-time withstand current 10 mm <sup>2</sup>	1.2 kA
Result	Test passed

### Power-frequency withstand voltage

Test voltage setpoint	2.2 kV
Result	Test passed

## Mechanical properties

### Mechanical data

Open side panel	Yes
-----------------	-----

## Mechanical tests

### Mechanical strength

Result	Test passed
--------	-------------

### Attachment on the carrier

DIN rail/fixing support	NS 35
Test force setpoint	5 N
Result	Test passed

### Test for conductor damage and slackening

Rotation speed	10 rpm
Revolutions	135
Conductor cross section/weight	0.2 mm <sup>2</sup> / 0.2 kg
	10 mm <sup>2</sup> / 2 kg

# Feed-through terminal block - ST 10



3036110

<https://www.phoenixcontact.com/ro/produse/3036110>

	16 mm <sup>2</sup> / 2.9 kg
Result	Test passed

## Environmental and real-life conditions

### Aging

Temperature cycles	192
Result	Test passed

### Needle-flame test

Time of exposure	30 s
Result	Test passed

### Oscillation/broadband noise

Specification	DIN EN 50155 (VDE 0115-200):2008-03
Spectrum	Service life test category 1, class B, body mounted
Frequency	$f_1 = 5 \text{ Hz}$ to $f_2 = 150 \text{ Hz}$
ASD level	1.857 (m/s <sup>2</sup> )/Hz
Acceleration	0.8g
Test duration per axis	5 h
Test directions	X-, Y- and Z-axis
Result	Test passed

### Shocks

Specification	DIN EN 50155 (VDE 0115-200):2008-03
Pulse shape	Half-sine
Acceleration	5g
Shock duration	30 ms
Number of shocks per direction	3
Test directions	X-, Y- and Z-axis (pos. and neg.)
Result	Test passed

### Ambient conditions

Ambient temperature (operation)	-60 °C ... 105 °C (max. short-term operating temperature RTI Elec.)
Ambient temperature (storage/transport)	-25 °C ... 60 °C (for a short time, not exceeding 24 h, -60 °C to +70 °C)
Ambient temperature (assembly)	-5 °C ... 70 °C
Ambient temperature (actuation)	-5 °C ... 70 °C
Permissible humidity (storage/transport)	30 % ... 70 %

## Standards and regulations

Connection in acc. with standard	IEC 60947-7-1
	IEC/EN 60079-7

## Mounting

Mounting type	NS 35/7,5
---------------	-----------

# Feed-through terminal block - ST 10

3036110

<https://www.phoenixcontact.com/ro/produse/3036110>



---

NS 35/15

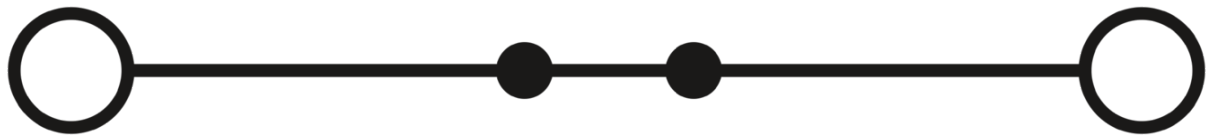
# Feed-through terminal block - ST 10

3036110

<https://www.phoenixcontact.com/ro/produse/3036110>

Desene

Circuit diagram






# Feed-through terminal block - ST 10



3036110

<https://www.phoenixcontact.com/ro/produse/3036110>

## Aprobări

CSA 	Tensiune nominală $U_N$	Curent nominal $I_N$	Secțiune transversală AWG	Secțiune transversală $mm^2$
Use group B	600 V	65 A	16 - 6	-
Use group C	600 V	65 A	16 - 6	-

### IECEE CB Scheme

### DNV GL


### LR

### KR


### NK

### RS

### BV

VDE Gutachten mit Fertigungsüberwachung 	Tensiune nominală $U_N$	Curent nominal $I_N$	Secțiune transversală AWG	Secțiune transversală $mm^2$
	1000 V	57 A	-	1.5 - 10

### PRS

cULus Recognized 	Tensiune nominală $U_N$	Curent nominal $I_N$	Secțiune transversală AWG	Secțiune transversală $mm^2$
Use group B	600 V	65 A	16 - 6	-
Use group C	600 V	65 A	16 - 6	-

# Feed-through terminal block - ST 10




3036110

<https://www.phoenixcontact.com/ro/produse/3036110>

ATEX 

EAC Ex 

IECEX 

CCC 

NEPSI 

# Feed-through terminal block - ST 10



3036110

<https://www.phoenixcontact.com/ro/produse/3036110>

## Clasificări

### ECLASS

ECLASS-9.0	27141120
ECLASS-10.0.1	27141120
ECLASS-11.0	27141120

### ETIM

ETIM 6.0	EC000897
----------	----------

### UNSPSC

UNSPSC 19.0	39121410
UNSPSC 20.0	39121410
UNSPSC 21.0	39121410

# Feed-through terminal block - ST 10



3036110

<https://www.phoenixcontact.com/ro/produce/3036110>

## Environmental Product Compliance

China RoHS	Environmentally friendly use period: unlimited = EFUP-e No hazardous substances above threshold values
------------	---

# Feed-through terminal block - ST 10

3036110

<https://www.phoenixcontact.com/ro/produse/3036110>

## Accesorii



Indicație: Funcționarea produsului poate fi restricționată în cazul utilizării împreună cu unul din accesorii prezentate mai jos.

### Screwdriver

Screwdriver - SZF 3-1,0X5,5 - 1206612



Actuation tool, for ST terminal blocks, also suitable for use as a bladed screwdriver, size: 1.0 x 5.5 x 150 mm, 2-component grip, with non-slip grip

### Marker pen

Marker pen - X-PEN 0,35 - 0811228



Marker pen without ink cartridge, for manual labeling of markers, labeling extremely wipe-proof, line thickness 0.35 mm

# Feed-through terminal block - ST 10

3036110

<https://www.phoenixcontact.com/ro/produse/3036110>



## Mounting material

Mounting material - ST-IL - 3039900

Operating decal for the ST terminal block



---

## Warning cover

Warning cover - WST 10/35 - 3030006

Warning cover, 5-pos., for terminal widths of 10.2 mm, 12.2 mm, and 16 mm



# Feed-through terminal block - ST 10

3036110

<https://www.phoenixcontact.com/ro/produse/3036110>

## Zack marker strip

Zack marker strip - ZB 10:UNBEDRUCKT - 1053001

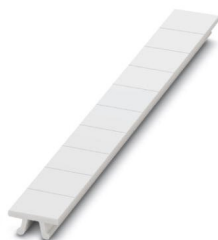


Zack marker strip, Strip, white, unlabeled, can be labeled with: PLOTMARK, CMS-P1-PLOTTER, mounting type: snap into tall marker groove, for terminal block width: 10.2 mm, lettering field size: 10.5 x 10.15 mm, Number of individual labels: 10

---

## Zack marker strip

Zack marker strip - ZB 10 CUS - 0824941



Zack marker strip, can be ordered: Strip, white, labeled according to customer specifications, mounting type: snap into tall marker groove, for terminal block width: 10.2 mm, lettering field size: 10.15 x 10.5 mm, Number of individual labels: 10

# Feed-through terminal block - ST 10

3036110

<https://www.phoenixcontact.com/ro/produse/3036110>

## Zack marker strip

Zack marker strip - ZB10,LGS:FORTL.ZAHLEN - 1053014



Zack marker strip, Strip, white, labeled, can be labeled with: CMS-P1-PLOTTER, printed horizontally: consecutive numbers 1 ... 10, 11 ... 20, etc. up to 91 ... 100, mounting type: snap into tall marker groove, for terminal block width: 10.2 mm, lettering field size: 10.15 x 10.5 mm, Number of individual labels: 10

---

## Zack marker strip

Zack marker strip - ZB10,QR:FORTL.ZAHLEN - 1053027



Zack marker strip, Strip, white, labeled, can be labeled with: CMS-P1-PLOTTER, Printed vertically: consecutive numbers 1 ... 10, 11 ... 20, etc. up to 91 ... 100, mounting type: snap into tall marker groove, for terminal block width: 10.2 mm, lettering field size: 10.15 x 10.5 mm, Number of individual labels: 10



# Feed-through terminal block - ST 10

3036110

<https://www.phoenixcontact.com/ro/produse/3036110>



DIN rail perforated

DIN rail perforated - NS 35/ 7,5 PERF 2000MM - 0801733



DIN rail perforated, acc. to EN 60715, material: Steel, galvanized, passivated with a thick layer, Standard profile, color: silver

DIN rail perforated

DIN rail perforated - NS 35/ 7,5 WH PERF 2000MM - 1204119



DIN rail perforated, acc. to EN 60715, material: Steel, Galvanized, white passivated, Standard profile, color: silver

# Feed-through terminal block - ST 10

3036110

<https://www.phoenixcontact.com/ro/produce/3036110>



## DIN rail perforated

DIN rail perforated - NS 35/ 7,5 ZN PERF 2000MM - 1206421



DIN rail perforated, acc. to EN 60715, material: Steel, galvanized, Standard profile, color: silver

---

## Device circuit breakers

Device circuit breakers - PTCB E1 24DC/1-8A NO - 2908262



Single-channel electronic circuit breaker for protecting 24 V DC loads against overload and short circuit. Simple potential distribution using components from the CLIPLINE complete terminal block system. With electronic locking of the set nominal currents. For installation on DIN rails.

# Feed-through terminal block - ST 10

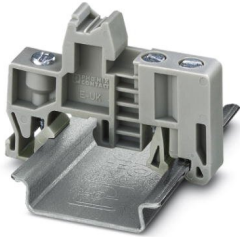
3036110

<https://www.phoenixcontact.com/ro/produse/3036110>

End clamp

End clamp - E/UK - 1201442

End clamp, Mounting on a DIN rail NS 32 or NS 35, material: PA, color: gray



End clamp

End clamp - E/UK 1 - 1201413

End clamps, for supporting the ends of double-level and three-level terminal blocks, width: 10 mm, color: gray



# Feed-through terminal block - ST 10

3036110

<https://www.phoenixcontact.com/ro/produse/3036110>



## End clamp

End clamp - CLIPFIX 35 - 3022218

Quick mounting end clamp for NS 35/7,5 DIN rail or NS 35/15 DIN rail, with marking option, width: 9.5 mm, color: gray



---

## End clamp

End clamp - CLIPFIX 35-5 - 3022276

Quick mounting end clamp for NS 35/7,5 DIN rail or NS 35/15 DIN rail, with marking option, with parking option for FBS...5, FBS...6, KSS 5, KSS 6, width: 5.15 mm, color: gray



# Feed-through terminal block - ST 10

3036110

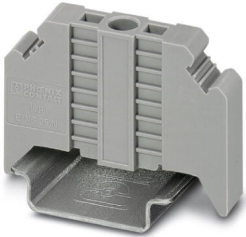
<https://www.phoenixcontact.com/ro/produse/3036110>



## End clamp

End clamp - E/NS 35 N - 0800886

End clamp, width: 9.5 mm, color: gray



---

## Reducing bridge

Reducing bridge - RB ST 10-(2,5/4) - 3030873

Reducing bridge, pitch: 10 mm, color: red



 Max. current carrying capacity: 35 A

# Feed-through terminal block - ST 10

3036110

<https://www.phoenixcontact.com/ro/produse/3036110>



## Reducing bridge

Reducing bridge - RB ST 10-1,5/S - 3213252



Reducing bridge, pitch: 3.5 mm, color: red

 Max. current carrying capacity: 24 A

---

## End cover

End cover - D-ST 10 - 3036644



End cover, length: 71.5 mm, width: 2.2 mm, height: 49.9 mm, color: gray

# Feed-through terminal block - ST 10

3036110

<https://www.phoenixcontact.com/ro/produse/3036110>



## Insulating sleeve

Insulating sleeve - MPS-IH WH - 0201663

Insulating sleeve, color: white



---

## Insulating sleeve

Insulating sleeve - MPS-IH RD - 0201676

Insulating sleeve, color: red



# Feed-through terminal block - ST 10

3036110

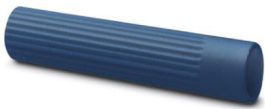
<https://www.phoenixcontact.com/ro/produse/3036110>



## Insulating sleeve

Insulating sleeve - MPS-IH BU - 0201689

Insulating sleeve, color: blue



---

## Insulating sleeve

Insulating sleeve - MPS-IH YE - 0201692

Insulating sleeve, color: yellow





# Feed-through terminal block - ST 10

3036110

<https://www.phoenixcontact.com/ro/produse/3036110>



## Insulating sleeve

Insulating sleeve - MPS-IH GN - 0201702

Insulating sleeve, color: green



---

## Insulating sleeve

Insulating sleeve - MPS-IH GY - 0201728

Insulating sleeve, color: gray



# Feed-through terminal block - ST 10

3036110

<https://www.phoenixcontact.com/ro/produse/3036110>



## Insulating sleeve

Insulating sleeve - MPS-IH BK - 0201731

Insulating sleeve, color: black



---

## End cap

End cap - NS 35/ 7,5 CAP - 1206560

DIN rail end piece, for DIN rail NS 35/7.5



# Feed-through terminal block - ST 10

3036110

<https://www.phoenixcontact.com/ro/produse/3036110>



DIN rail, unperforated

DIN rail, unperforated - NS 35/ 7,5 UNPERF 2000MM - 0801681



DIN rail, unperforated, acc. to EN 60715, material: Steel, galvanized, passivated with a thick layer, Standard profile, color: silver

DIN rail, unperforated

DIN rail, unperforated - NS 35/ 7,5 WH UNPERF 2000MM - 1204122



DIN rail, unperforated, acc. to EN 60715, material: Steel, Galvanized, white passivated, Standard profile, color: silver

# Feed-through terminal block - ST 10

3036110

<https://www.phoenixcontact.com/ro/produse/3036110>



DIN rail, unperforated

DIN rail, unperforated - NS 35/ 7,5 AL UNPERF 2000MM - 0801704



DIN rail, unperforated, acc. to EN 60715, material: Aluminum, uncoated, Standard profile, color: silver

DIN rail, unperforated

DIN rail, unperforated - NS 35/ 7,5 ZN UNPERF 2000MM - 1206434



DIN rail, unperforated, acc. to EN 60715, material: Steel, galvanized, Standard profile, color: silver

# Feed-through terminal block - ST 10

3036110

<https://www.phoenixcontact.com/ro/produse/3036110>

DIN rail, unperforated

DIN rail, unperforated - NS 35/ 7,5 CU UNPERF 2000MM - 0801762

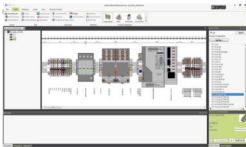


DIN rail, unperforated, acc. to EN 60715, material: Copper, uncoated, Standard profile, color: copper-colored

---

Software

Software - PROJECT COMPLETE - 1050453



Intuitive planning and marking software for configuring terminal strips and for professional marking of marking materials for terminal blocks, conductors, cables, devices, and systems. The software is available for download

# Feed-through terminal block - ST 10

3036110

<https://www.phoenixcontact.com/ro/produse/3036110>



## Plug-in bridge

Plug-in bridge - FBS 2-10 - 3005947



Plug-in bridge, pitch: 10.2 mm, color: red

 Max. current carrying capacity: 57 A

---

## Plug-in bridge

Plug-in bridge - FBS 5-10 - 3005948



Plug-in bridge, pitch: 10.2 mm, color: red

 Max. current carrying capacity: 57 A

# Feed-through terminal block - ST 10

3036110

<https://www.phoenixcontact.com/ro/produse/3036110>



## Plug-in bridge

Plug-in bridge - FBS 5-10 BU - 1040620



Plug-in bridge, pitch: 10.2 mm, color: blue

 Max. current carrying capacity: 57 A

---

## Test plugs

Test plugs - MPS-MT - 0201744



Test plugs, with solder connection up to 1 mm<sup>2</sup> conductor cross section, color: gray

# Feed-through terminal block - ST 10

3036110

<https://www.phoenixcontact.com/ro/produse/3036110>

## Marker for terminal blocks

Marker for terminal blocks - ZB10,LGS:L1-N,PE - 1053412



Marker for terminal blocks, Strip, white, labeled, can be labeled with: CMS-P1-PLOTTER, horizontal: L1, L2, L3, N, PE, L1, L2, L3, N, PE, mounting type: snap into tall marker groove, for terminal block width: 10.2 mm, lettering field size: 10.15 x 10.5 mm, Number of individual labels: 10

---

## Marker for terminal blocks

Marker for terminal blocks - ZB10,LGS:U-N - 1053438



Marker for terminal blocks, Strip, white, labeled, can be labeled with: CMS-P1-PLOTTER, horizontal: U, V, W, N, GND, U, V, W, N, GND, mounting type: snap into tall marker groove, for terminal block width: 10.2 mm, lettering field size: 10.15 x 10.5 mm, Number of individual labels: 10



# Feed-through terminal block - ST 10

3036110

<https://www.phoenixcontact.com/ro/produse/3036110>

## Marker for terminal blocks

Marker for terminal blocks - UC-TM 10 - 0818069



Marker for terminal blocks, Sheet, white, unlabeled, can be labeled with: BLUEMARK ID COLOR, BLUEMARK ID, BLUEMARK CLED, PLOTMARK, CMS-P1-PLOTTER, mounting type: snap into tall marker groove, for terminal block width: 10.2 mm, lettering field size: 9.6 x 10.5 mm, Number of individual labels: 48

---

## Marker for terminal blocks

Marker for terminal blocks - UC-TM 10 CUS - 0824605



Marker for terminal blocks, can be ordered: by sheet, white, labeled according to customer specifications, mounting type: snap into tall marker groove, for terminal block width: 10.2 mm, lettering field size: 9.6 x 10.5 mm, Number of individual labels: 48

# Feed-through terminal block - ST 10

3036110

<https://www.phoenixcontact.com/ro/produse/3036110>

## Marker for terminal blocks

Marker for terminal blocks - UCT-TM 10 - 0829142



Marker for terminal blocks, Sheet, white, unlabeled, can be labeled with: TOPMARK NEO, TOPMARK LASER, BLUEMARK ID COLOR, BLUEMARK ID, BLUEMARK CLED, THERMOMARK PRIME, THERMOMARK CARD 2.0, THERMOMARK CARD, mounting type: snap into tall marker groove, for terminal block width: 10.2 mm, lettering field size: 8.9 x 9.6 mm, Number of individual labels: 36

---

## Marker for terminal blocks

Marker for terminal blocks - UCT-TM 10 CUS - 0829623



Marker for terminal blocks, can be ordered: by sheet, white, labeled according to customer specifications, mounting type: snap into tall marker groove, for terminal block width: 10.2 mm, lettering field size: 8.9 x 9.6 mm, Number of individual labels: 36

# Feed-through terminal block - ST 10

3036110

<https://www.phoenixcontact.com/ro/produse/3036110>

## Electronic circuit breaker

Electronic circuit breaker - PTCB E1 24DC/1-3A NO - 2909909

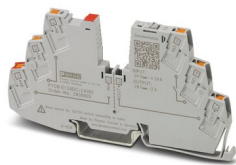


Single-channel electronic circuit breaker for protecting 24 V DC loads against overload and short circuit. Simple potential distribution using components from the CLIPLINE complete terminal block system. With electronic locking of the set nominal currents. For installation on DIN rails.

---

## Electronic circuit breaker

Electronic circuit breaker - PTCB E1 24DC/2A NO - 2909903



Single-channel electronic circuit breaker for protecting 24 V DC loads against overload and short circuit. Simple potential distribution using components from the CLIPLINE complete terminal block system. With fixed nominal current. For installation on DIN rails.

# Feed-through terminal block - ST 10

3036110

<https://www.phoenixcontact.com/ro/produse/3036110>

## Electronic circuit breaker

Electronic circuit breaker - PTCB E1 24DC/1-4A NO - 2908261



Single-channel electronic circuit breaker for protecting 24 V DC loads against overload and short circuit. Simple potential distribution using components from the CLIPLINE complete terminal block system. With electronic locking of the set nominal currents. For installation on DIN rails.

---

## Electronic circuit breaker

Electronic circuit breaker - PTCB E1 24DC/3A NO - 2909904



Single-channel electronic circuit breaker for protecting 24 V DC loads against overload and short circuit. Simple potential distribution using components from the CLIPLINE complete terminal block system. With fixed nominal current. For installation on DIN rails.

# Feed-through terminal block - ST 10

3036110

<https://www.phoenixcontact.com/ro/produse/3036110>

## Electronic circuit breaker

Electronic circuit breaker - PTCB E1 24DC/4A NO - 2909906

Single-channel electronic circuit breaker for protecting 24 V DC loads against overload and short circuit. Simple potential distribution using components from the CLIPLINE complete terminal block system. With fixed nominal current. For installation on DIN rails.

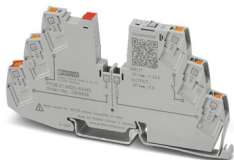


---

## Electronic circuit breaker

Electronic circuit breaker - PTCB E1 24DC/6A NO - 2909908

Single-channel electronic circuit breaker for protecting 24 V DC loads against overload and short circuit. Simple potential distribution using components from the CLIPLINE complete terminal block system. With fixed nominal current. For installation on DIN rails.



# Feed-through terminal block - ST 10

3036110

<https://www.phoenixcontact.com/ro/produse/3036110>

## Electronic circuit breaker

Electronic circuit breaker - PTCB E1 24DC/1A NO - 2909902



Single-channel electronic circuit breaker for protecting 24 V DC loads against overload and short circuit. Simple potential distribution using components from the CLIPLINE complete terminal block system. With fixed nominal current. For installation on DIN rails.

---

## Electronic circuit breaker

Electronic circuit breaker - PTCB E1 24DC/8A NO - 2909910



Single-channel electronic circuit breaker for protecting 24 V DC loads against overload and short circuit. Simple potential distribution using components from the CLIPLINE complete terminal block system. With fixed nominal current. For installation on DIN rails.

# Feed-through terminal block - ST 10

3036110

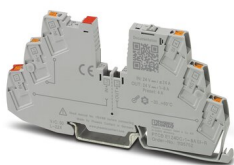
<https://www.phoenixcontact.com/ro/produse/3036110>



## Electronic circuit breaker

Electronic circuit breaker - PTCB E1 24DC/1-8A SI-R - 1135752

Single-channel, electronic fuse for the protection of 24 V loads. Simple potential distribution using terminal blocks from the CLIPLINE complete system. With status output, reset input, and electronic interlock. For installation on DIN rails.

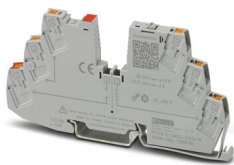


---

## Electronic circuit breaker

Electronic circuit breaker - PTCB E1 24DC/2A SI-R - 1135749

Single-channel, electronic fuse for the protection of 24 V loads. Simple potential distribution using terminal blocks from the CLIPLINE complete system. With status output, reset input, and electronic interlock. For installation on DIN rails.



# Feed-through terminal block - ST 10

3036110

<https://www.phoenixcontact.com/ro/produse/3036110>



## Electronic circuit breaker

Electronic circuit breaker - PTCB E1 24DC/1-4A SI-R - 1135753

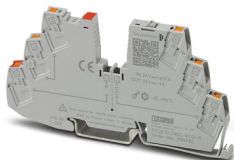


Single-channel, electronic fuse for the protection of 24 V loads. Simple potential distribution using terminal blocks from the CLIPLINE complete system. With status output, reset input, and electronic interlock. For installation on DIN rails.

---

## Electronic circuit breaker

Electronic circuit breaker - PTCB E1 24DC/4A SI-R - 1135745



Single-channel, electronic fuse for the protection of 24 V loads. Simple potential distribution using terminal blocks from the CLIPLINE complete system. With status output, reset input, and electronic interlock. For installation on DIN rails.



# Feed-through terminal block - ST 10

3036110

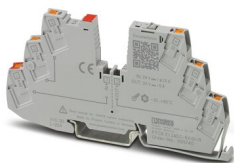
<https://www.phoenixcontact.com/ro/produse/3036110>



## Electronic circuit breaker

Electronic circuit breaker - PTCB E1 24DC/6A SI-R - 1135740

Single-channel, electronic fuse for the protection of 24 V loads. Simple potential distribution using terminal blocks from the CLIPLINE complete system. With status output, reset input, and electronic interlock. For installation on DIN rails.

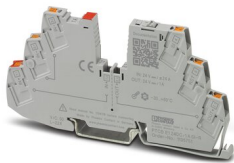


---

## Electronic circuit breaker

Electronic circuit breaker - PTCB E1 24DC/1A SI-R - 1135751

Single-channel, electronic fuse for the protection of 24 V loads. Simple potential distribution using terminal blocks from the CLIPLINE complete system. With status output, reset input, and electronic interlock. For installation on DIN rails.



# Feed-through terminal block - ST 10

3036110

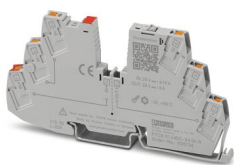
<https://www.phoenixcontact.com/ro/produse/3036110>



## Electronic circuit breaker

Electronic circuit breaker - PTCB E1 24DC/8A SI-R - 1135734

Single-channel, electronic fuse for the protection of 24 V loads. Simple potential distribution using terminal blocks from the CLIPLINE complete system. With status output, reset input, and electronic interlock. For installation on DIN rails.



---

Phoenix Contact 2021 © - Toate drepturile rezervate  
<https://www.phoenixcontact.com>

PHOENIX CONTACT România  
Splaiul Unirii 165 Timpuri Noi Square TNO1, Etaj 1  
Bucuresti 030133  
+40 21 350 88 12 - 3  
[sales.ro@phoenixcontact.com](mailto:sales.ro@phoenixcontact.com)