

# Industrial Ethernet Switch - FL SWITCH SFNB 8TX



2891002

<https://www.phoenixcontact.com/ro/produse/2891002>

Vă rugăm să țineți cont de faptul că datele afișate în acest document PDF au fost generate din catalogul nostru online. Datele complete sunt disponibile în documentația pentru utilizator. În cazul descărcărilor, se aplică Termenii și condițiile generale de utilizare ale companiei noastre.



Ethernet switch, 8 TP RJ45 ports, automatic detection of data transmission speed of 10/100 Mbps (RJ45), autocrossing function

## Avantajele dumneavoastră

- Auto negotiation and autocrossing detection simplifies installation and setup
- Local diagnostic indicators with LEDs
- RJ45 ports support a transmission speed of 10/100 Mbps

# Industrial Ethernet Switch - FL SWITCH SFNB 8TX



2891002

<https://www.phoenixcontact.com/ro/produse/2891002>

## Date comerciale

Cod comandă	2891002
Unitate de ambalare	1 Bucată
Cantitate minimă pentru comandă	1 Bucată
Indicație	Produs la comandă (nereturnabil)
Cod produs	DNN113
Pagina de catalog	Pagina 289 (C-6-2019)
GTIN	4046356457170
Greutate pe bucată (inclusiv ambalajul)	407,0 GRM
Greutate pe bucată (fără ambalaj)	385,0 GRM
Cod tarifar vamal	85176200
Țara de origine	TW

## Date tehnic

### Dimensions

Width	50 mm
Height	110 mm
Depth	70 mm

### Material specifications

Housing material	Aluminum
------------------	----------

### Mounting

Mounting type	DIN rail
---------------	----------

### Interfaces

#### Ethernet (RJ45)

Connection method	RJ45
Note on the connection method	Auto negotiation and autocrossing
Transmission speed	10/100 Mbps
Transmission physics	Ethernet in RJ45 twisted pair
Transmission length	100 m (per segment)
Signal LEDs	Data receive, link status
No. of channels	8 (RJ45 ports)

### Product properties

Type	Block design
MTTF	95.6 Years (MIL-HDBK-217F standard, temperature 25°C, operating cycle 100%)

#### Switch functions

Basic functions	Unmanaged switch / auto negotiation, complies with IEEE 802.3, store and forward switching mode
MAC address table	2k
Status and diagnostic indicators	LEDs: U <sub>S</sub> , link and activity per port
Additional functions	Autonegotiation

#### Security functions

Basic functions	Unmanaged switch / auto negotiation, complies with IEEE 802.3, store and forward switching mode
-----------------	---

### Electrical properties

Local diagnostics	US Supply voltage Green LED
	LNK/ACT Link status/data transmission Green LED
	100 Data transmission speed Yellow LED
Maximum power dissipation for nominal condition	3.36 W
Transmission medium	Copper

2891002

<https://www.phoenixcontact.com/ro/produse/2891002>

## Supply

Supply voltage	24 V DC
Supply voltage range	9 V DC ... 32 V DC
Power supply connection	Via COMBICON, max. conductor cross section 2.5 mm <sup>2</sup>
Residual ripple	3.6 V <sub>PP</sub> (within the permitted voltage range)
Max. current consumption	380 mA (@9 V DC)
Typical current consumption	140 mA (at U <sub>S</sub> = 24 V DC)

## Connection data

Connection method	Screw connection
Conductor cross section, rigid	0.2 mm <sup>2</sup> ... 2.5 mm <sup>2</sup>
Conductor cross section, flexible	0.2 mm <sup>2</sup> ... 2.5 mm <sup>2</sup>
Conductor cross section AWG	30 ... 12
Stripping length	7 mm

## Ambient conditions

Degree of protection	IP20
Ambient temperature (operation)	-10 °C ... 60 °C
Ambient temperature (storage/transport)	-20 °C ... 85 °C
Permissible humidity (operation)	5 % ... 95 % (non-condensing)
Permissible humidity (storage/transport)	5 % ... 95 % (non-condensing)
Air pressure (operation)	86 kPa ... 108 kPa (up to 1500 m above sea level)

## Approval data

### Conformity/Approvals

UL, USA / Canada	Class I, Div. 2, Groups A, B, C, D
------------------	------------------------------------

## EMC data

Electromagnetic compatibility	Conformance with EMC Directive 2004/108/EC
Noise emission	EN 61000-6-4
Noise immunity	EN 61000-6-2:2005

## LED signaling

Status display	LEDs: U <sub>S</sub> , link and activity per port
----------------	---

# Industrial Ethernet Switch - FL SWITCH SFNB 8TX



2891002

<https://www.phoenixcontact.com/ro/produse/2891002>

## Aprobări

IECEE CB Scheme  
CB

EAC

UL Listed

cUL Listed

KC

cUL Listed

UL Listed

cUL Listed

UL Listed

# Industrial Ethernet Switch - FL SWITCH SFNB 8TX



2891002

<https://www.phoenixcontact.com/ro/produse/2891002>

## Clasificări

### ECLASS

ECLASS-9.0	19170106
ECLASS-10.0.1	19170402
ECLASS-11.0	19170402

### ETIM

ETIM 6.0	EC000734
----------	----------

### UNSPSC

UNSPSC 19.0	43222612
UNSPSC 20.0	43222612
UNSPSC 21.0	43222612

# Industrial Ethernet Switch - FL SWITCH SFNB 8TX



2891002

<https://www.phoenixcontact.com/ro/produce/2891002>

## Environmental Product Compliance

REACH SVHC	Lead 7439-92-1
China RoHS	Environmentally Friendly Use Period = 10; For details about hazardous substances go to tab "Downloads", Category "Manufacturer's declaration"

# Industrial Ethernet Switch - FL SWITCH SFNB 8TX



2891002

<https://www.phoenixcontact.com/ro/produce/2891002>

## Accesorii

### DIN rail adapter

DIN rail adapter - FL DIN RA - 2891053

The FL DIN RA is installed in a standard, 19-inch rack (EIA-310-D, IEC 60297-3-100) to allow DIN rail mounted equipment to be rack mounted.



---

### Patch cable

Patch cable - FL CAT5 PATCH 0,5 - 2832263

Patch cable, CAT5, assembled, 0.5 m





# Industrial Ethernet Switch - FL SWITCH SFNB 8TX

2891002

<https://www.phoenixcontact.com/ro/produse/2891002>

## Patch cable

Patch cable - FL CAT5 PATCH 1,0 - 2832276



Patch cable, CAT5, assembled, 1 m

---

## Patch cable

Patch cable - FL CAT5 PATCH 2,0 - 2832289



Patch cable, CAT5, assembled, 2 m

# Industrial Ethernet Switch - FL SWITCH SFNB 8TX

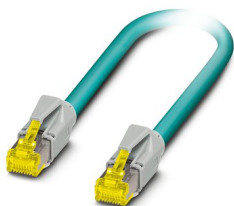


2891002

<https://www.phoenixcontact.com/ro/produse/2891002>

## Patch cable

Patch cable - NBC-R4AC-R4AC-IE8A/.../... - 1411854

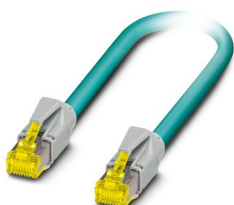


Patch cable, degree of protection: IP20, number of positions: 8, 10 Gbps, CAT6<sub>A</sub>, cable outlet: straight, Ethernet

---

## Patch cable

Patch cable - NBC-R4AC/10G-R4AC/10G-94F/2,0 - 1408360



Patch cable, CAT6<sub>A</sub>, 4-pair, shielded, connection not crossed (line), assembled at both ends with RJ45/IP20 connectors, outer sheath material: PUR, length: 2.0 m

# Industrial Ethernet Switch - FL SWITCH SFNB 8TX

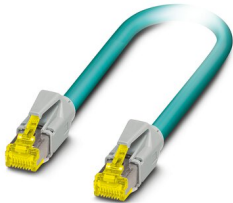


2891002

<https://www.phoenixcontact.com/ro/produse/2891002>

## Patch cable

Patch cable - NBC-R4AC/10G-R4AC/10G-94F/3,0 - 1408365



Patch cable, CAT6<sub>A</sub>, 4-pair, shielded, connection not crossed (line), assembled at both ends with RJ45/IP20 connectors, outer sheath material: PUR, length: 3.0 m

---

## Surge protection device

Surge protection device - DT-LAN-CAT.6+ - 2881007



Surge protection in accordance with Class E<sub>A</sub> (CAT6<sub>A</sub>), for Gigabit Ethernet (up to 10 Gbps), token ring, FDDI/CDDI, ISDN, and DS1. Suitable for Power over Ethernet (PoE++ / 4PPoE) "Mode A" and "Mode B". RJ45 attachment plug with separate grounding cable and ground connection snap-on foot for NS 35 DIN rails.

# Industrial Ethernet Switch - FL SWITCH SFNB 8TX

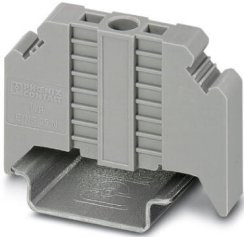
2891002

<https://www.phoenixcontact.com/ro/produse/2891002>

## End clamp

End clamp - E/NS 35 N - 0800886

End clamp, width: 9.5 mm, color: gray



---

## Printed-circuit board connector

Printed-circuit board connector - MSTB 2,5/ 4-ST - 1754481

PCB connector, nominal cross section: 2.5 mm<sup>2</sup>, color: green, nominal current: 12 A, rated voltage (III/2): 320 V, contact surface: Tin, type of contact: Female connector, number of potentials: 4, Number of rows: 1, Number of positions per row: 4, number of connections: 4, product range: MSTB 2,5/..-ST, pitch: 5 mm, connection method: Screw connection with tension sleeve, screw head form: L Slotted, conductor/PCB connection direction: 0 °, Locking clip: - Locking clip, plug-in system: CLASSIC COMBICON, Locking: without, mounting: without, type of packaging: packed in cardboard



# Industrial Ethernet Switch - FL SWITCH SFNB 8TX

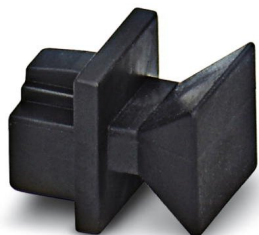


2891002

<https://www.phoenixcontact.com/ro/produse/2891002>

## Protective cap

Protective cap - FL RJ45 PROTECT CAP - 2832991



Dust protection caps for RJ45 socket

---

## Safety locking

Safety locking - FL SEC PAC 4TX - 2832865

Layer1 security elements for four RJ45 network connections for use with patch boxes and panels



---

Phoenix Contact 2021 © - Toate drepturile rezervate  
<https://www.phoenixcontact.com>

PHOENIX CONTACT România  
Splaiul Unirii 165 Timpuri Noi Square TNO1, Etaj 1  
Bucuresti 030133  
+40 21 350 88 12 - 3  
[sales.ro@phoenixcontact.com](mailto:sales.ro@phoenixcontact.com)