

KNIPEX-Plier Wrench

The complete Range



Art.-No.	Length	Handles	Working Capacities		Δ
			Nr.	mm/inch	
86 03	180/7"	plastic coated	up to 35	1 3/8"	260
86 03	250/10"		up to 46	1 3/4"	540
86 03	300/12"		up to 60	2 3/8"	725
86 05	180/7"	two-colour, dual component	up to 35	1 3/8"	280
86 05	250/10"		up to 46	1 3/4"	570

- ▶ Gripping Plier and Wrench in a single tool
- ▶ highly suitable for gripping, holding, squeezing and bending workpieces; also for the careful installation of finished -surface fittings
- ▶ grips all sizes up to 35/46/60 mm / 1 3/8" / 1 3/4" / 2 3/8"
- ▶ parallel, smooth jaws
- ▶ fast adjustment at the touch of a button with the tool on the workpiece
- ▶ the action of the jaw allows screw unions to be tightened and released quickly using the ratchet principle
- ▶ lever ratio greater than 10 - 1 for strong gripping power
- ▶ box joint construction

I would like to receive more information on the KNIPEX range.
I am particularly interested in:

Name: _____

Company/Position: _____

Address: _____

City, State, ZIP Code _____

Distributed by: _____

L100 01166/03/01.04/5.000/GB



KNIPEX Quality – Made in Germany

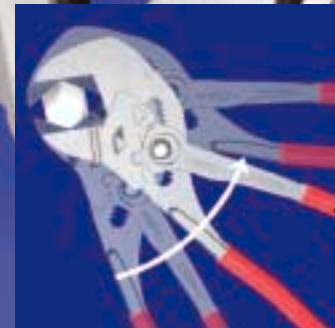


KNIPEX-Plier Wrench

Gripping Plier and Wrench in a single tool



Instant adjustment – jaws always parallel



Works using the ratchet principle

NEW: length 300 mm/12"
capacity up to 60 mm / 2 3/8"

KNIPEX-WERK
C. Gustav Putsch KG

P.O.Box 12 04 05
D-42334 Wuppertal

Phone: +49 202/47 94-0
Fax: +49 202/47 50 58
Fax Export: +49 202/47 74 94
Internet: www.knipex.com
E-Mail: info@knipex.de



KNIPEX-Plier Wrench

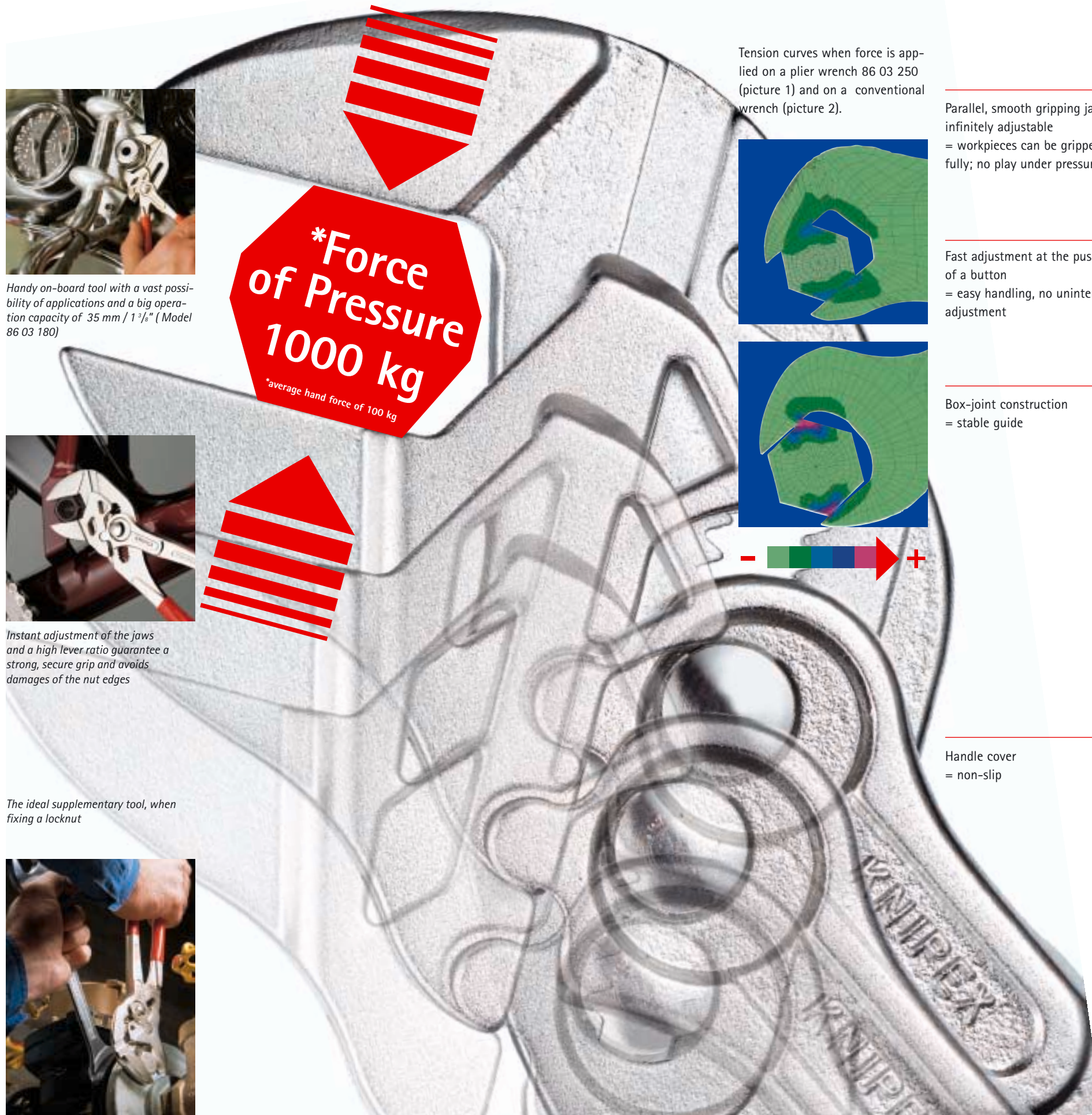
Fastening, gripping, holding and bending with a single tool

The Plier Wrench combines the jobs of a gripping plier and a wrench in a single tool. Screws, nuts and fittings of capacities up to a maximum of 60 mm / 2 3/8" can be tightened and released easily and smoothly.

The Plier Wrench can be easily adjusted at the touch of a button on the workpiece. The infinitely adjustable gripping jaws are always parallel. They grip without play under pressure. Thus a damage to the edges is avoided – this is particularly important when working on plated and soft fittings.

Working with the Plier Wrench offers the advantage of using the ratchet principle: No need to reset the tool on the workpiece. Thanks to the favourable ratio the jaws can grip extremely strong. This is why the Plier Wrench is suitable for gripping, holding, squeezing and bending.

Being a universal tool the Plier Wrench can be employed in nearly every sector of assembly, maintenance and repair. It also serves well as on-board tool for motor vehicles, motorbikes, bikes and boats.



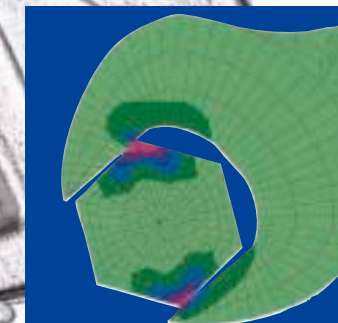
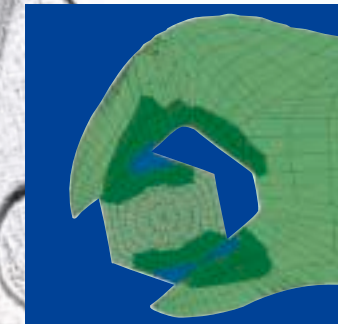
Handy on-board tool with a vast possibility of applications and a big operation capacity of 35 mm / 1 3/8" (Model 86 03 180)

***Force of Pressure 1000 kg**
*average hand force of 100 kg



Instant adjustment of the jaws and a high lever ratio guarantee a strong, secure grip and avoids damages of the nut edges

Tension curves when force is applied on a plier wrench 86 03 250 (picture 1) and on a conventional wrench (picture 2).



Parallel, smooth gripping jaws – infinitely adjustable
= workpieces can be gripped carefully; no play under pressure

Fast adjustment at the push of a button
= easy handling, no unintentional adjustment

Box-joint construction
= stable guide

Handle cover
= non-slip



Enormous gripping power and a capacity up to 60 mm / 2 3/8" allows work on larger size bolts and nuts (Model 86 03 300)

Parallel, smooth gripping jaws are particularly suitable for the careful assembly of plated and soft fittings

The ideal supplementary tool, when fixing a locknut

